



TSXV: STA

Gold Rush Project

2020

Sanatana Resources is focused on Gold and Copper Exploration led by a team with success in the Discovery and Development of World Class Mineral Deposits.

Cautionary Statements & Technical Disclosure

This presentation is for information purposes only and does not constitute an offer to sell or a solicitation to buy the securities referred to herein.

This document includes forward looking statements. Forward looking statements inherently involve subjective judgement and analysis and are subject to significant uncertainties, risks and contingencies, many of which are outside of the control of, and may be unknown to, the company. Actual results and developments may vary materially from those expressed in these materials. The types of uncertainties which are relevant to the company may include, but are not limited to, commodity prices, political uncertainty, changes to the regulatory framework which applies to the business of the company and general economic conditions. Given these uncertainties, readers are cautioned not to place undue reliance on such forward looking statements. Forward looking statements in these materials speak only at the date of issue. Subject to any continuing obligations under applicable law or any relevant stock

exchange listing rules, the company does not in providing this information undertake any obligation to publicly update or revise any of the forward looking statements or any change in events, conditions or circumstances on which any such statement is based.

Buddy Doyle, BAppSc (Geol.), MAusIMM, VP Exploration of Sanatana Resources Inc., a Qualified Person, as such term is defined in National Instrument 43-101 - Standards of Disclosure for Mineral Projects (“NI 43-101”), has reviewed and approved the scientific and technical disclosure contained herein.

Veteran Leadership and Professional Advisors

Peter Miles, CEO, Director

Formerly a Vice President at Midland Doherty Inc, Dean Witter Reynolds and CIBC World Markets, Mr. Miles has raised in excess of \$100M for a variety of resource companies, including Roughrider Uranium. Mr. Miles was instrumental in structuring Roughrider's acquisition by Hathor Exploration Ltd., which was subsequently acquired by Rio Tinto for in excess of \$600M in 2012. Mr. Miles continues to sit on the board of Gamehost Inc., a significant Canadian gaming and hotel company based in Red Deer, Alberta. Mr. Miles is the founder of Sanatana Resources.

Buddy Doyle, President, Director

Formerly the Vice President Exploration for North American Diamonds at Rio Tinto, Mr. Doyle has more than twenty-five years experience in mineral exploration, including work as Senior Project Geologist at the 30+ million ounce Lihir gold mine discovery in Papua New Guinea and co-discoverer of the Diavik Mine, Canada. Mr. Doyle is a Member AusIMM and a Qualified Person as defined by National Instrument 43-101.

Ian Smith, Chairman, Independent Director

A mining engineering graduate of the University of Queensland, Australia, Mr. Smith has 50 years' experience in, operations and project management and consulting within the international base and precious metals industries. Mr. Smith was Mine Superintendent at the 90,000 tpd Bougainville Copper mine in Papua New Guinea. As President and CEO of bcMetals Corp., he engineered the 30,000tpd Red Chris copper/gold porphyry project for development in northwest BC prior to it being acquired by Imperial Metals Corp. Mr. Smith was President and founding partner of the consulting company Mineral Resources Development Inc.. until it was purchased in 1995.

Darcy Will, Independent Director

Mr. Will is a commercial real estate developer and President, director and co-founder of the publicly traded company Gamehost Inc.

Simon Anderson, Chief Financial Officer

Mr. Anderson is a Chartered Professional Accountant with a broad range of public and private experience in both the US and Canada. Formerly Mr. Anderson was a partner at an international accounting and consulting firm.

McMillan LLP, Legal Counsel

A leading Canadian business law firm with offices in Toronto, Vancouver, Calgary, Ottawa, Montréal, and Hong Kong.



Gold Rush

Project details

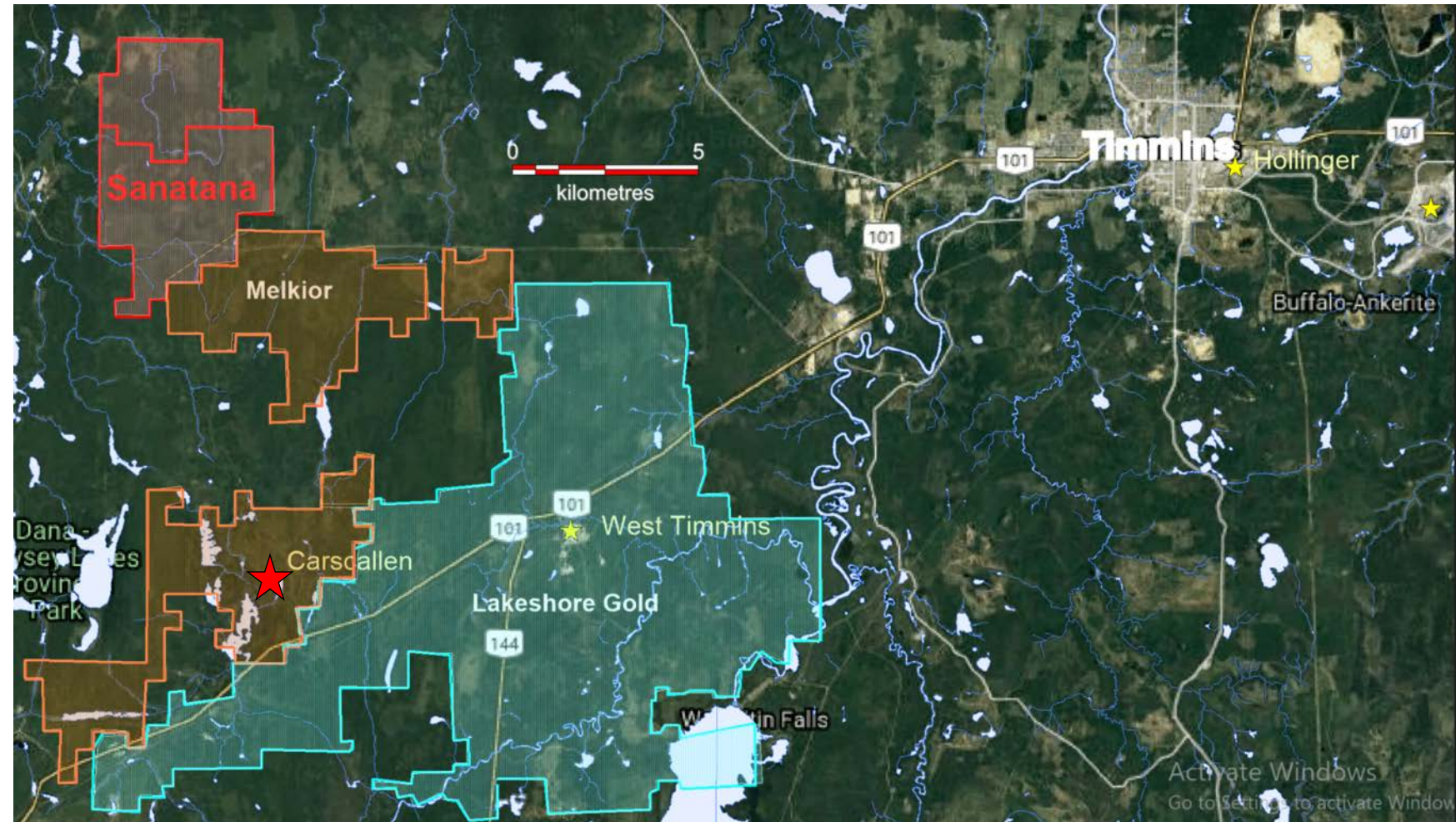
Project Overview

- Exploring in the prolific > 70million ounce Timmins Gold Camp, Ontario.
- Recent discoveries have highlighted the continuing potential of the district.
- 2200ha property 100% owned 25km W of the city of Timmins, 7km north of the Melkior's new Carscallen discovery, 11 km north west of Pan American Silver's West Timmins Mine.
- World-class jurisdiction, excellent infrastructure, road access, grid power
- Numerous gold bearing float and outcrop found in different zones across the project, yet to be systematically explored.
- Airborne EM data highlights untested anomalies



Location Map

- ★ Operating Mine
- ★ New Discovery



Geology and Mineralization

Property geology consists of tholeiitic mafic volcanic rocks of the Kamiskotia volcanic complex (Lower Blake River Assemblage age equivalent at 2707-2701 Ma) and intrusive rocks including gabbro with lesser interlaced anorthosite of the Kamiskotia Intrusive Complex intruded by younger quartz porphyry and granodiorite bodies.

Gold Rush North

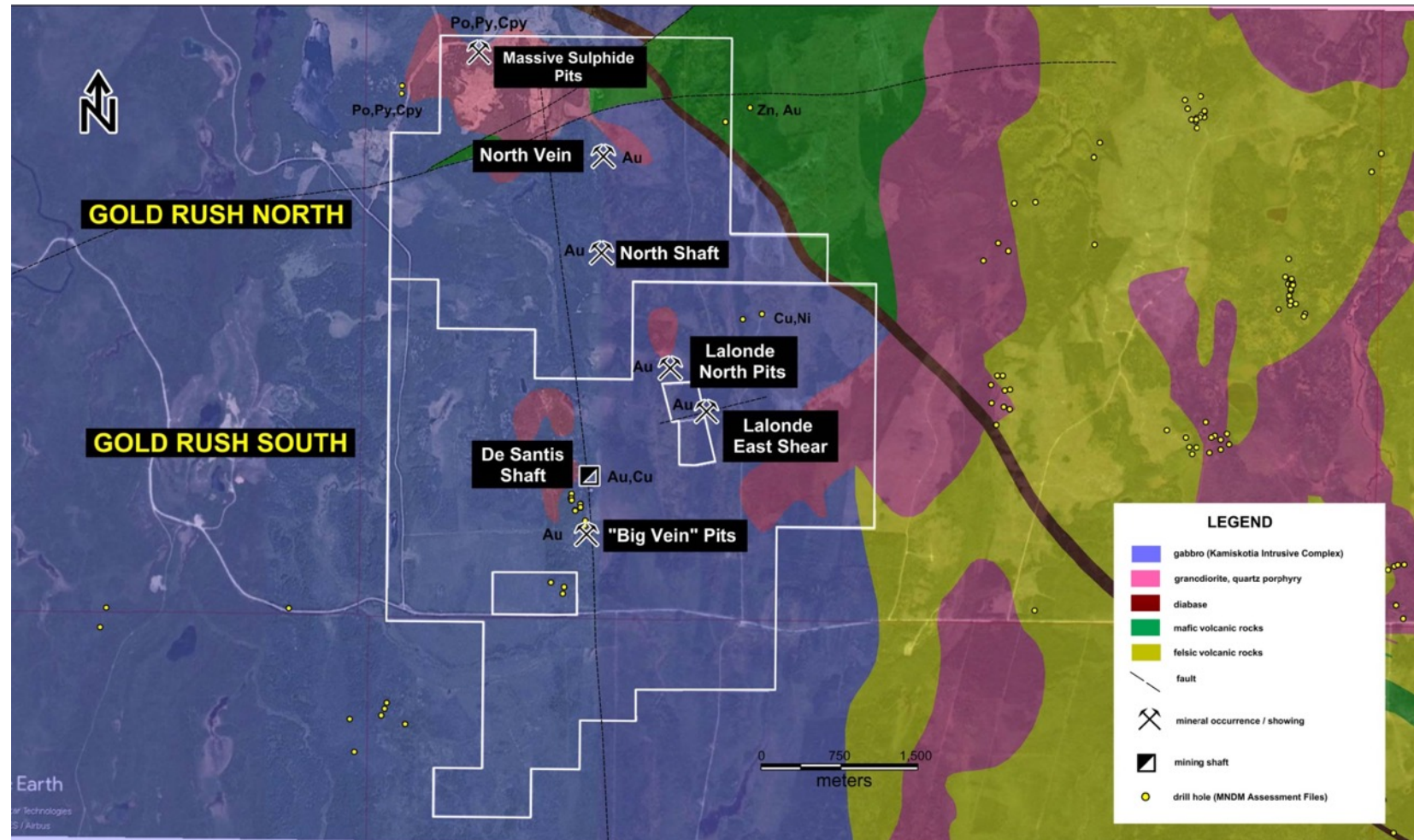
- The property has seen very little exploration and the underlying geology uncertain. Records show that no drilling has been completed in/near either the Shaft Zone or the north Vein zone.
- Re-sampling of a historic shaft/trench (Shaft Zone) by Onotsky, (1991) returned values including 195.3, 39.4, 11.3, 9.4 and 8.8 g/t Au
- 2 separate areas prospected by Laviolette (2017, 2019) returned 5.86, 5.96, 4.95 and 4.07 g/t Au from the North Shaft Zone area. Samples from the North Vein Zone returned 1.64 g/t Au.
- Mineralization is associated with shear zones hosted within intrusive gabbro and mafic volcanic rocks. Gold is associated with quartz veins/stringers and with silicified chlorite+/-sericite altered pyrite-rich mafic rocks

Gold Rush South

- The DeSantis Shaft showing consists of gold bearing quartz veins with associated cpy-py-gn-sph, hosted in gabbro and granodiorite (quartz porphyry). Work between 1927 and 1939, sunk the shaft to 38m below surface and then continued with 263m of horizontal development. In 1972, the workings were dewatered and an underground sampling/mapping project completed.
- The DeSantis vein strikes N13°W and dips vertically. The vein has been mapped for 51.8m in length and has a width of 1.22m at surface, widening to 1.52m at depth. Sampling from the 38m level in 1972, the south drift returned assays ranging from 4.35 g/t Au to 18.0 g/t Au within the quartz vein. Assays from pulps of grab samples from the trenches taken in 1983 returned up to 7.58% Cu. Grab samples collected in 1998 from trenches to the south of the shaft returned assays up to 77.35 g/t Au (Wilson, MNM, 2008).
- Numerous pits and trenches (i.e.: Big Vein Pits) on the property have identified additional quartz veins (parallel veins, off-sets) with assay values ranging from trace to > 31.1 g/t Au. Visible gold has been noted in a few samples.
- Gold mineralization appears to be controlled by both north-trending structures (DeSantis vein) and by also by east trending structures, which have seen very little exploration (North Shaft Zone, Lalonde East Shear for example).

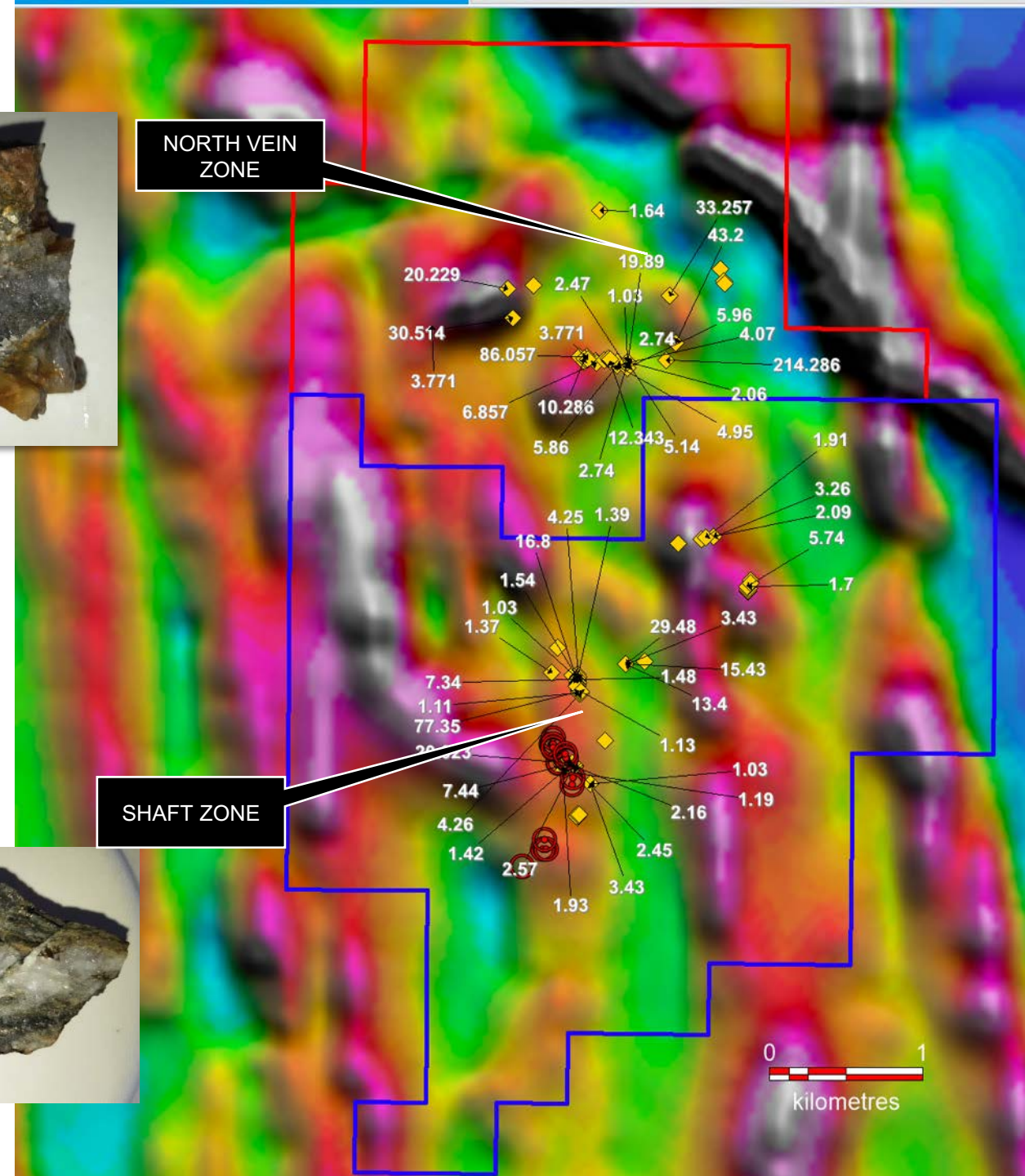
PLEASE NOTE: Sample results stated in the historic reports have not been verified by the Company, and readers are cautioned not to place undue weight on such results. The historical grades are considered relevant; however, the reliability, assumptions, parameters and methods used in preparing the reports are unknown. Grab samples are selected samples and are not indicative of the average grade of mineralization hosted on the Gold Rush Property.

Geology Map with Mineral Showings



Airborne Magnetics with Grab Sample Locations

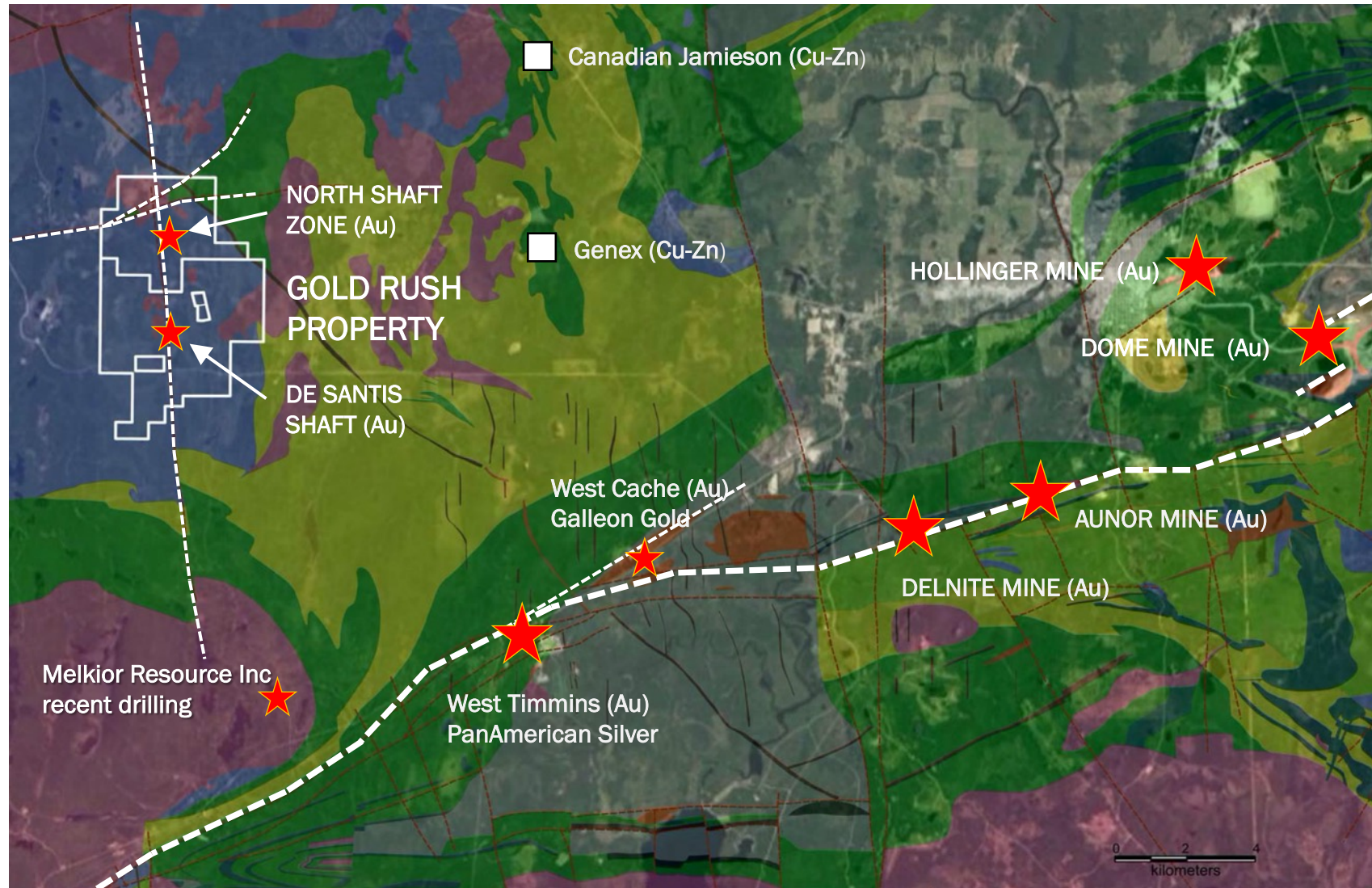
- Yellow diamonds:- Grab Sample locations.
- Those >1g/t are labelled.
- Red symbols historic drill hole collars.
- OGS 200m space Total Magnetic Field gridded background.



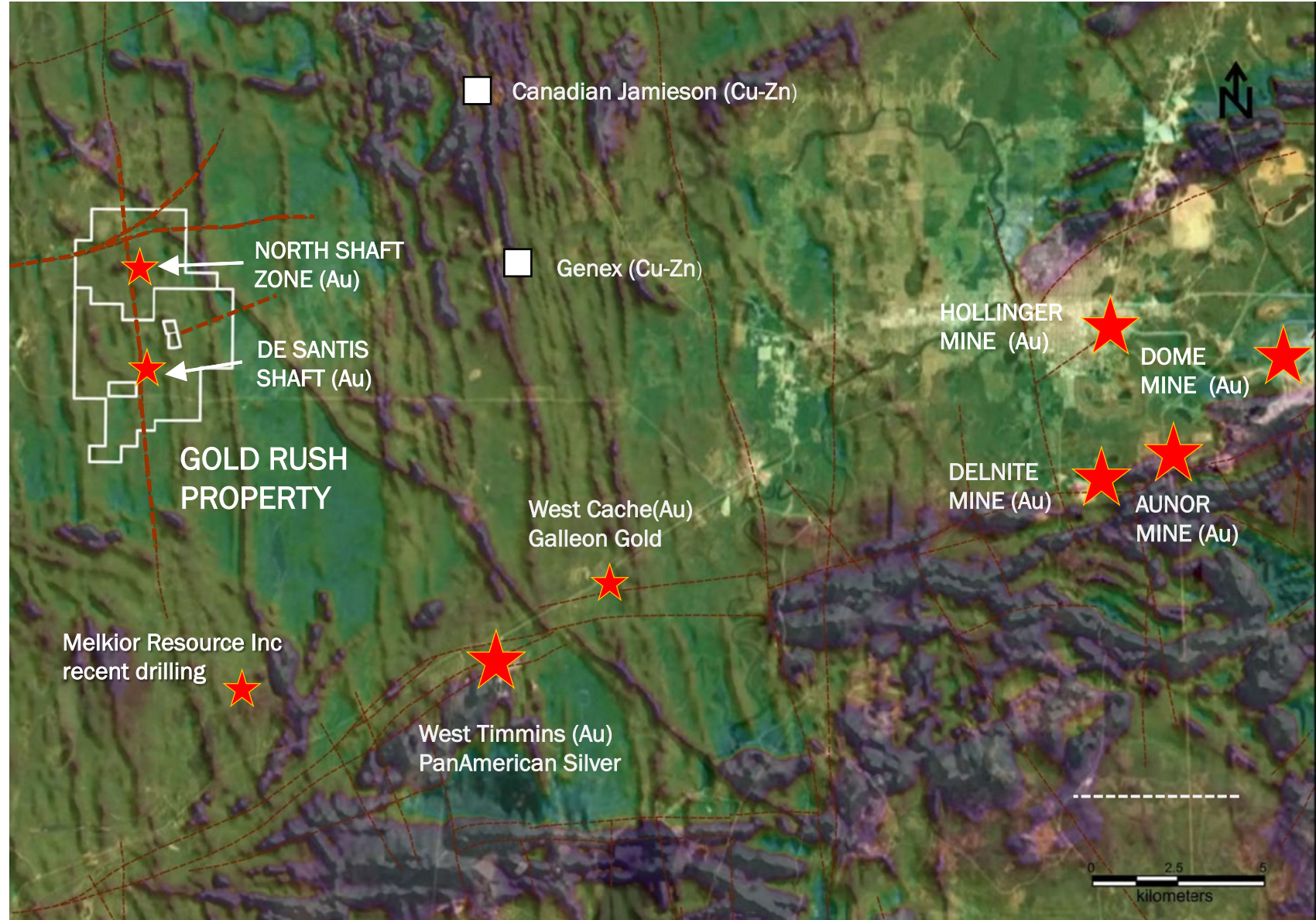
Geology Map

Legend

- Gabbro
- Granodiorite
- Mafic Volcanics
- Felsic Volcanics
- Sediments
- Au showings
- Au Mine
- Interpreted fault/shear

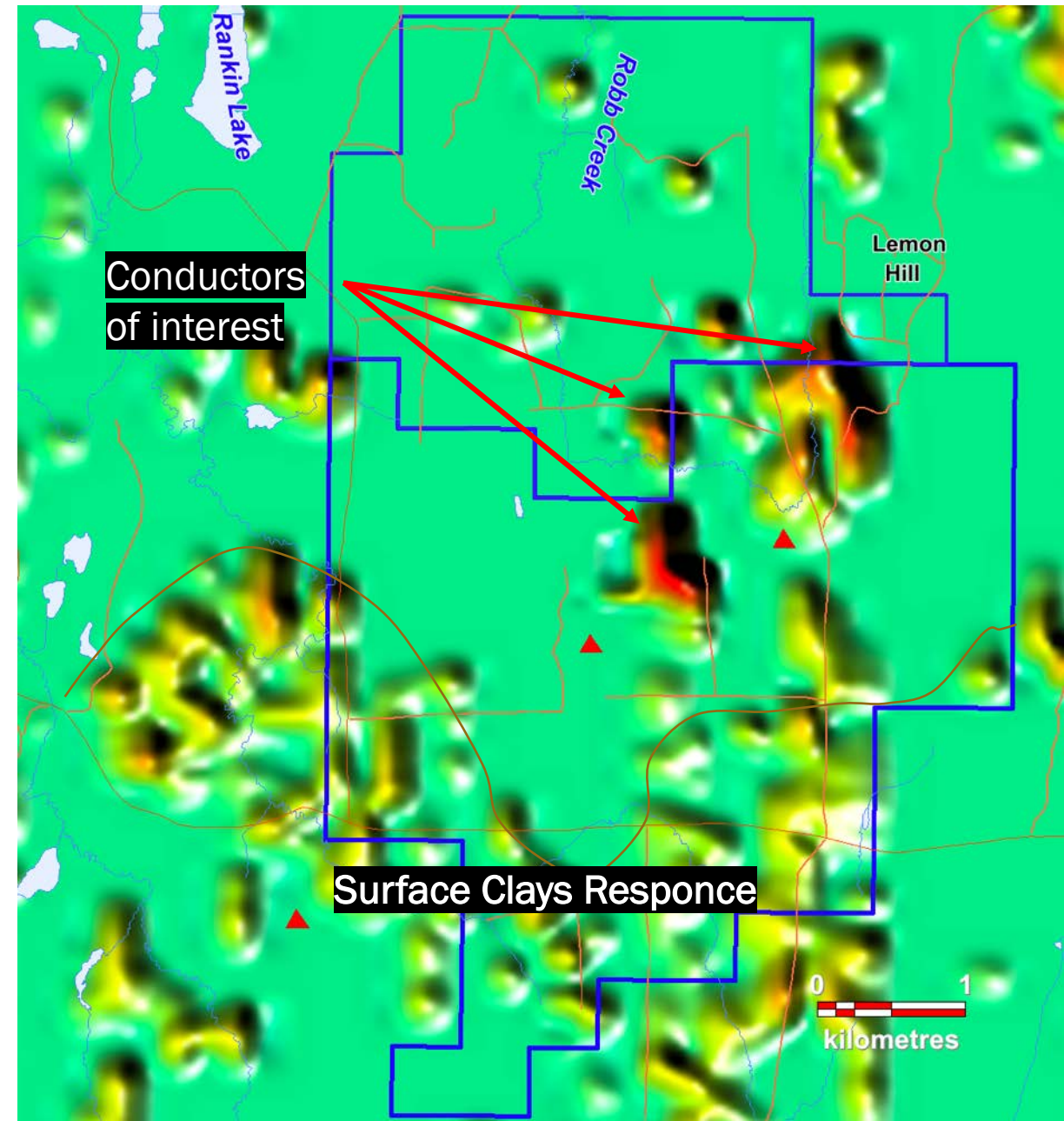


Airborne Magnetic Map (Total Field)



Electro-Magnetic Map GS 2003 Survey

In 2003 the Ontario Geological Survey (OGS) carried out a 200m spaced, north-south, time domain Electro-Magnetic (EM) survey that covered the Gold Rush property. The survey shows three groups of EM anomalies (Conductors) on the property that are hard to explain from the underlying geology which is mapped as gabbro. Encouragingly these anomalies were repeated when flown in part in 2013 with a helicopter mounted time domain survey at 100m line spacing, E-W orientation. The most likely explanation is that either alteration or sulphides are the source of these anomalies.



Geology and Mineralization



Massive Sulfide Pits



North Shaft Zone



North Shaft Zone

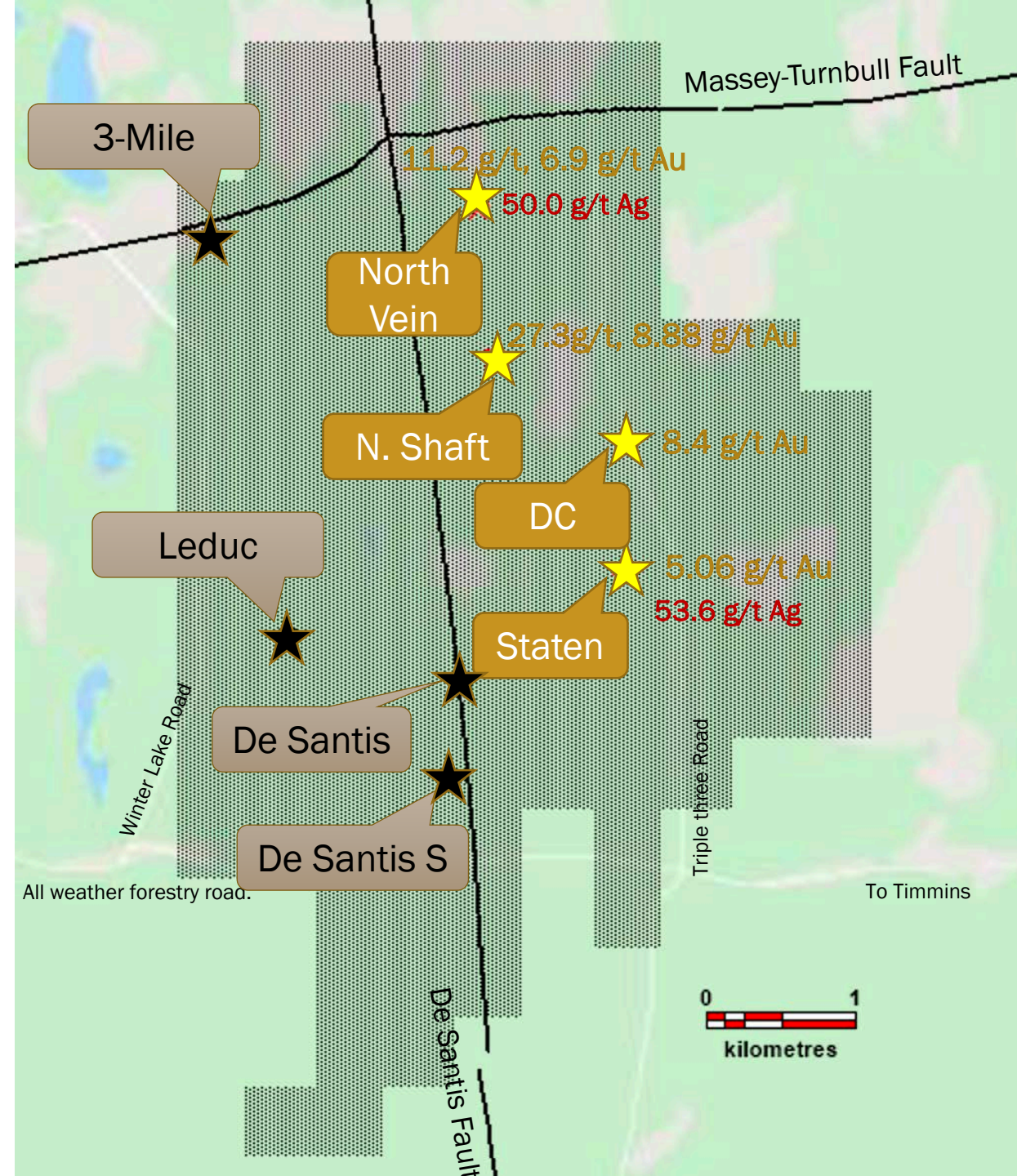
Geology and Mineralization



Gold Bearing Quartz Veins

- ★ Precious Metals Quartz Vein system. Grab samples approx. 12 taken each site.
 - >5g/t Au listed in orange
 - >50g/t Ag shown in red
- ★ Precious Metals Quartz Vein system. Assays awaited.

Note: Grab samples were taken to determine if the system was Au bearing or not, and do not demonstrate the economic viability.



Moving Forward: Our Immediate Plans

- Grid Prospecting, mapping, geology, alteration and mineralization
- Expose outcrop, systematic channel sampling
- Detailed magnetics, and time domain EM ground survey
- Option to fly ZTEM
- Drill Test



TSXV: STA

© 2020 Sanatana Resources Inc.

Phone: 604.408.6680

Fax: 604.608.9500

Investor Relations

info@sanatanaresources.com