



SANATANA
RESOURCES INC.

March 2023

TSXV: STA

Oweegee Dome

A Copper - Gold porphyry project beside the highway in BC's Golden Triangle

Cautionary Statements & Technical Disclosure

This presentation is for information purposes only and does not constitute an offer to sell or a solicitation to buy the securities referred to herein.

This document includes forward looking statements. Forward looking statements inherently involve subjective judgement and analysis and are subject to significant uncertainties, risks and contingencies, many of which are outside of the control of, and may be unknown to, the company. Actual results and developments may vary materially from those expressed in these materials. The types of uncertainties which are relevant to the company may include, but are not limited to, commodity prices, political uncertainty, changes to the regulatory framework which applies to the business of the company and general economic conditions. Given these uncertainties, readers are cautioned not to place undue reliance on such forward-looking statements.

Forward looking statements in these materials speak only at the date of issue. Subject to any continuing obligations under applicable law or any relevant stock exchange listing rules, the company does not in providing this information undertake any obligation to publicly update or revise any of the forward-looking statements or any change in events, conditions or circumstances on which any such statement is based.

Buddy Doyle, BAppSc (Geol.), MAusIMM, VP Exploration of Sanatana Resources Inc., a Qualified Person, as such term is defined in National Instrument 43-101—Standards of Disclosure for Mineral Projects (“NI 43-101”), has reviewed and approved the scientific and technical disclosure contained herein.

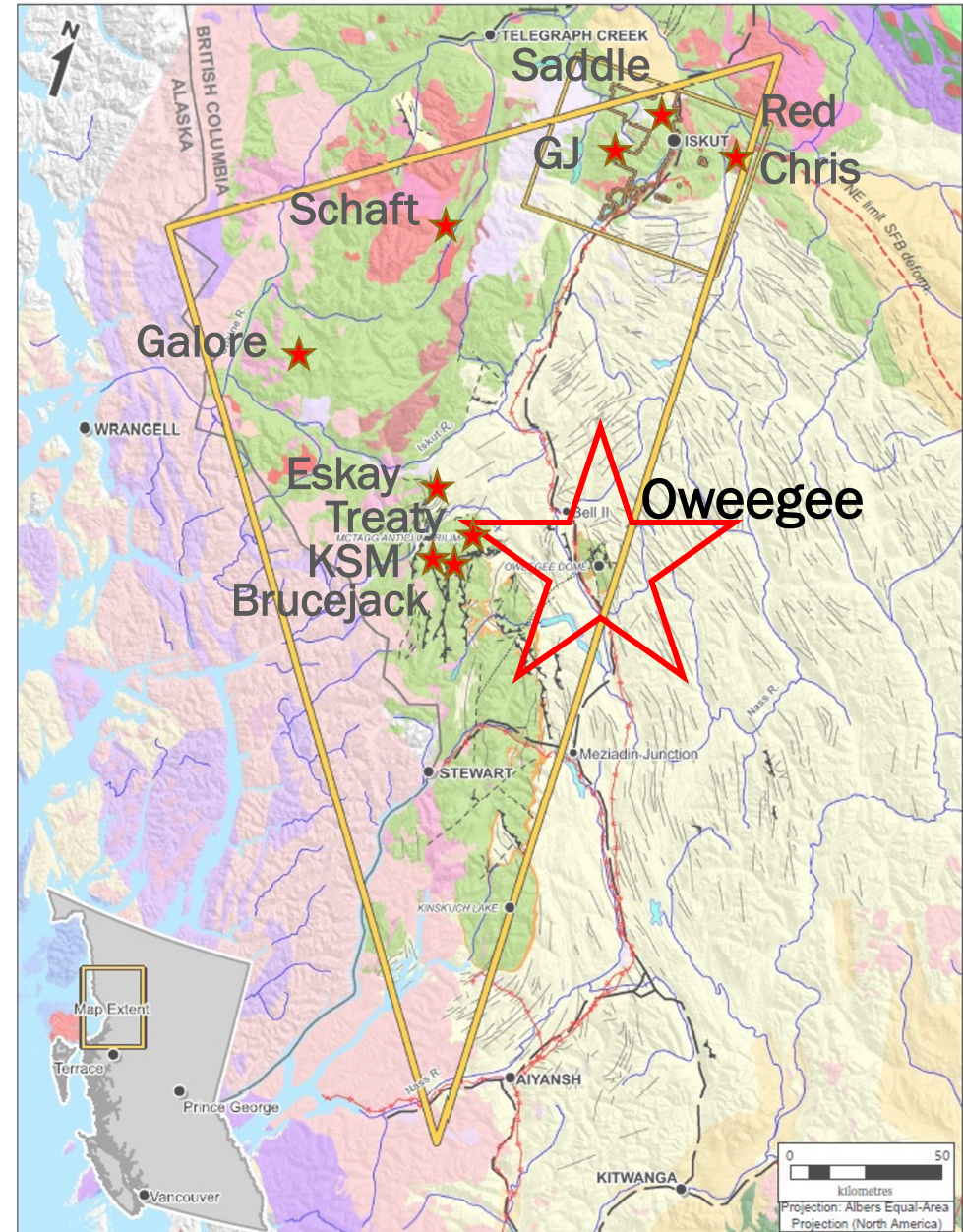
Oweegee Cu – Au Porphyry Project

31,077 hectares in BC's Golden Triangle

- Hwy 37 and the NW transmission line transect the property
- Similar geologic address to defined, large, Cu-Au project
- Multiple Cu-Au-Ag-Mo porphyry phases only recently recognized and underexplored

2022 program highlights:

- Drilling intercepted high-level porphyry breccias:
 - OW-2022-08: 112 m @ 0.31% eCu (0.17% Cu + 0.22 g/t Au + 1.1 g/t Ag)
 - OW-2022-09: 196 m @ 0.20% eCu (0.09% Cu + 0.13 g/t Au + 0.5 g/t Ag)
- IP geophysical anomalies identified
- Permitted for 2024 exploration drilling and IP program



Greig et al. 2021

An Undervalued Asset in the Golden Triangle

Sanatana's Oweegee project is an unparalleled opportunity in a globally significant mining district

Significant neighbouring projects include:



Brucejack Au-Ag mine: M+I Resource: 23.2 Mt @ 10.1 g/t Au + 65.5 g/t Ag purchased by Newcrest Mining CAD \$3.5 billion ~ Nov. 2021

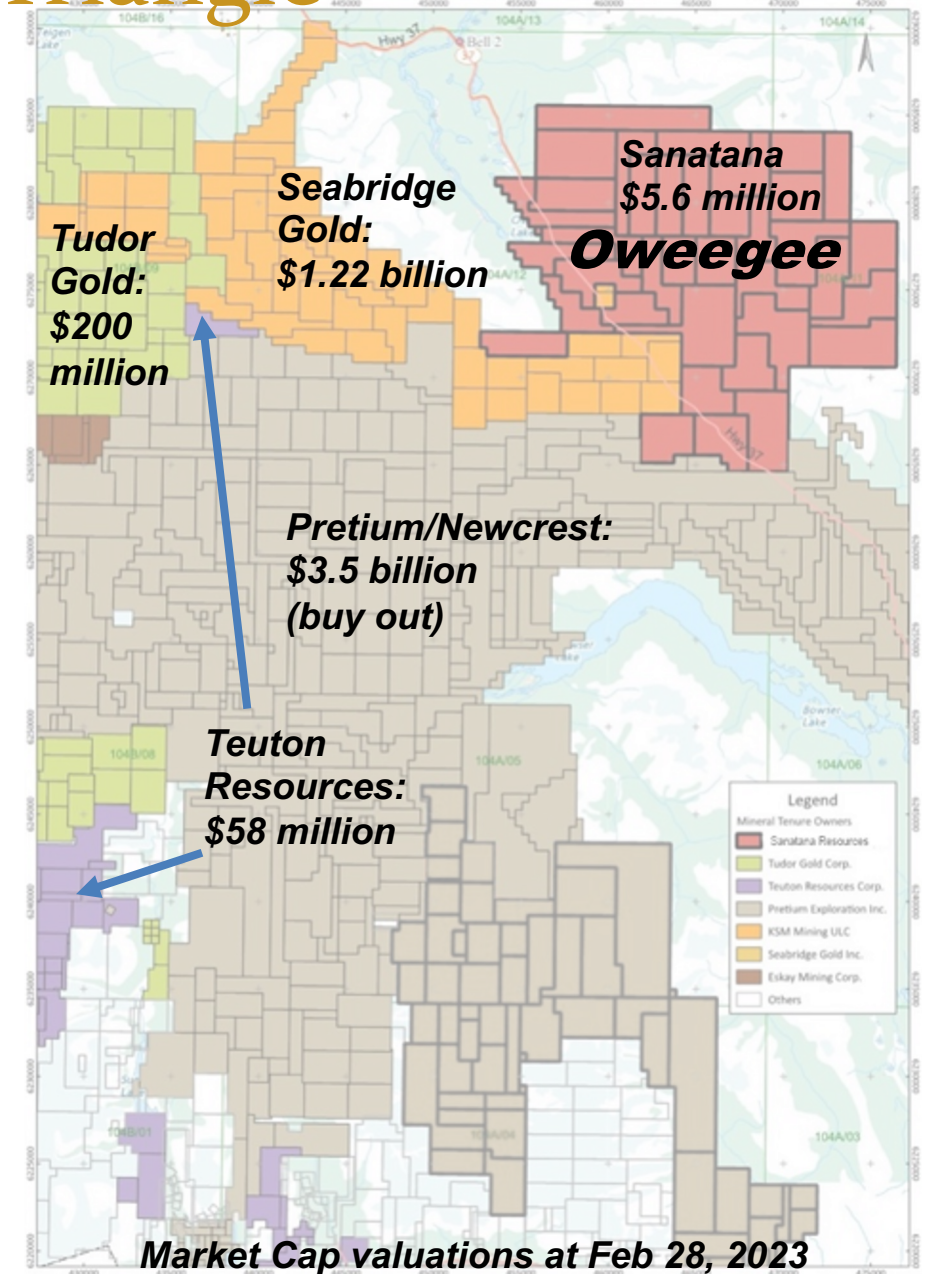
SEABRIDGE GOLD

The KSM porphyry gold-copper deposits:
Reserves: 2.198 Bt @ 0.21% Cu + 0.55 g/t Au



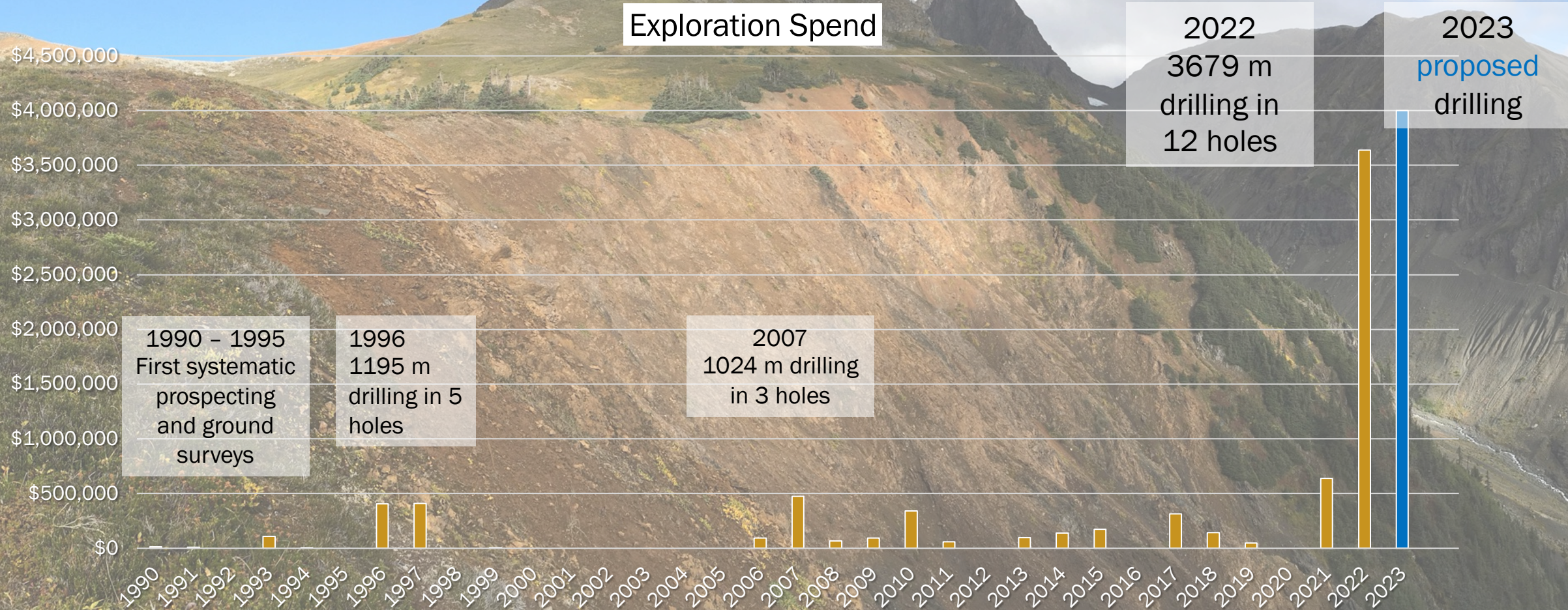
Tudor Gold's Treaty Creek gold-silver deposit:
M+I Resource: 815.7 Mt @ 0.66 g/t Au + 3.6 g/t Ag)

Brucejack, KSM and Treaty Creek collectively contain an estimated 199 million oz gold, 790 million oz silver and 51 billion lbs copper



Oweegee Exploration Drilling History and Expenditure

31,077 hectare project remains underexplored and highly prospective
Total meters drilled to date: 5,820



Recent Milestones

2021:

Recognized the opportunity and completed two tier option agreement with Arcwest

- Tier 1: Sanatana can earn 60% by expending \$6.6m in five years (expended \$4.4m to date)
- Tier 2: Sanatana can earn 80% by completing a feasibility study
- Five intrusive phases identified by field crews including the Molloy monzonite which contain "A" vein quartz-chalcopyrite stockworks and potassic alteration. U-Pb magmatic ages range between 217ma to 219 ma; the beginning of the BC porphyry window.
- Significant geological mapping recognizes abundant Stuhini Group unconformably overlain by unaltered Hazelton Group
- Reconnaissance IP survey identifies multiple anomalies

2022:

3,679m of drilling completed in 12 holes, confirmed porphyry Cu-Au-Ag-Mo mineralization at Delta, Molloy and Snowpatch creek. Closer spaced IP grid highlighted compelling anomalies. Field mapping expanded the area of intrusives, mineralization and alteration.

2022 Drilling

'Kyba' Red Line

Snowpatch

Molloy

Delta Ridge

OW-2022-12

OW-2022-05

OW-2022-06

OW-2022-04

OW-2022-02

OW-2022-01

OW-2022-07

OW-2022-09

2022-01 long hole to test Molloy

2022-02 Test IP anomaly

2022-03 to 07 Molloy

2022-08-09 Test and extend Delta copper zone

2022-10 Test Copper in soil anomaly

2022-11 Test O/C 0.1% Cu

2022-12 Test Potassic alteration at Snowpatch

OW-2022-10

OW-2022-08

DC07-01

DC96-04

DC96-01

DC07-03

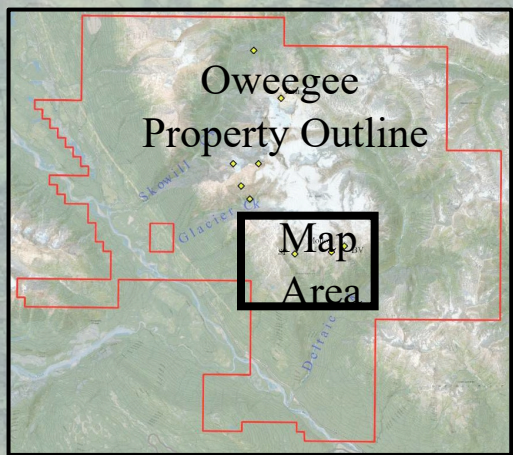
DC96-02

DC96-03

DC07-04

DC96-05

OW-2022-11



0 500 1,000 m

Drilling 2022

- 3,679 m in 12 holes
- Visible Cu mineralization observed in 8 holes
- Breccia everywhere, numerous styles, consistent with the upper zone of a porphyry system
- **Best intercepts received to date:**

OW-2022-08:

112 m @ 0.31% eCu

(0.17% Cu + 0.22 g/t Au + 1.1 g/t Ag)

OW-2022-09:

196m @ 0.20% eCu

(0.09% Cu + 0.13 g/t Au + 0.5 g/t Ag)

Drill Hole	From	To	Interval	Au g/t	Ag g/t	Cu%	Cu% equivalent	Prospect
OW-2022-03	9.1m	13m	3.9m	0.06g/t	0.59g/t	0.09%	0.13%	Molloy
OW-2022-04	3m	28m	25m	0.09g/t	0.08g/t	0.10%	0.18%	Molloy
OW-2022-05	18m	20m	2m	0.07g/t	0.57g/t	0.07%	0.12%	Molloy
	34.73m	36.0m	1.27m	0.10g/t	1.02g/t	0.07%	0.15%	
OW-2022-06	6.93m	16m	9.07m	0.09g/t	0.66g/t	0.09%	0.15%	Molloy
	30m	32m	2m	0.06g/t	1.19g/t	0.10%	0.16%	Molloy
OW-2022-07	51.72m	57.02m	5.3m	0.25g/t	0.51g/t	0.07%	0.25%	Molloy
OW-2022-08	6.5m	10.3m	3.8m	0.19g/t	1.60g/t	0.16%	0.31%	Delta Ridge
	58.37m	170.56m	112.18m	0.22g/t	1.10g/t	0.17%	0.33%	
OW-2022-09	4m	200m	196m	0.13g/t	1.50g/t	0.09%	0.20%	Delta Ridge
OW-2022-12	410m	412m	2m	0.09g/t	0.45g/t	0.08%	0.11%	Snowpatch

Drilling 2022 Delta Ridge Highlight Intercepts

OW-2022-08:

112 m @ 0.31% copper equivalent from
58.37 – 170.56 m

(0.17% Cu + 0.22 g/t Au + 1.1 g/t Ag)

77 – 89 m depth:

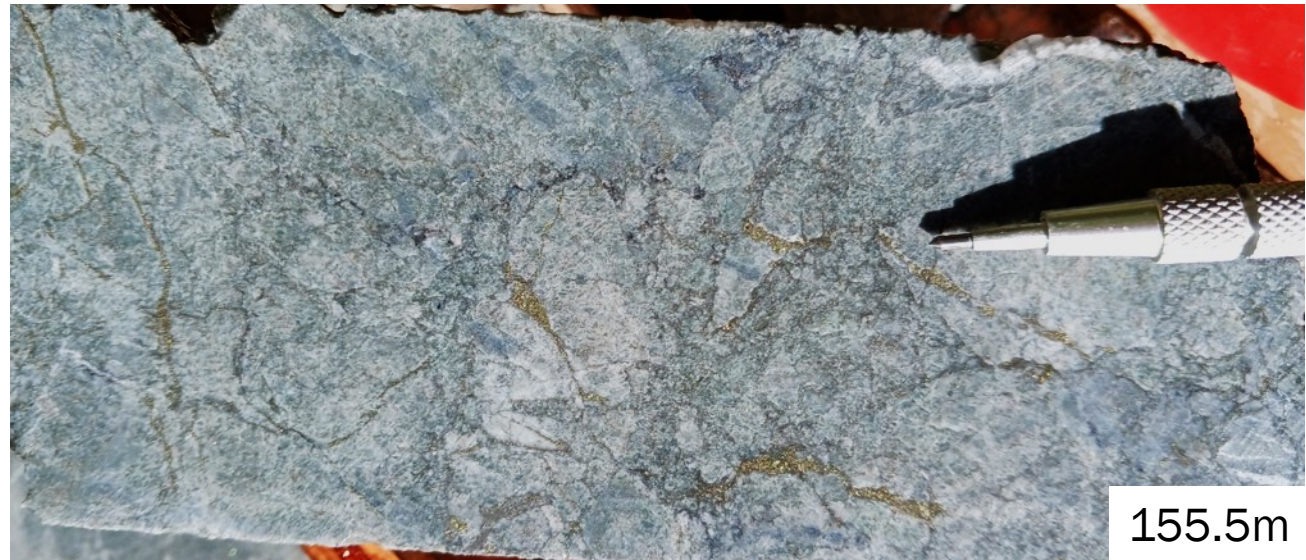
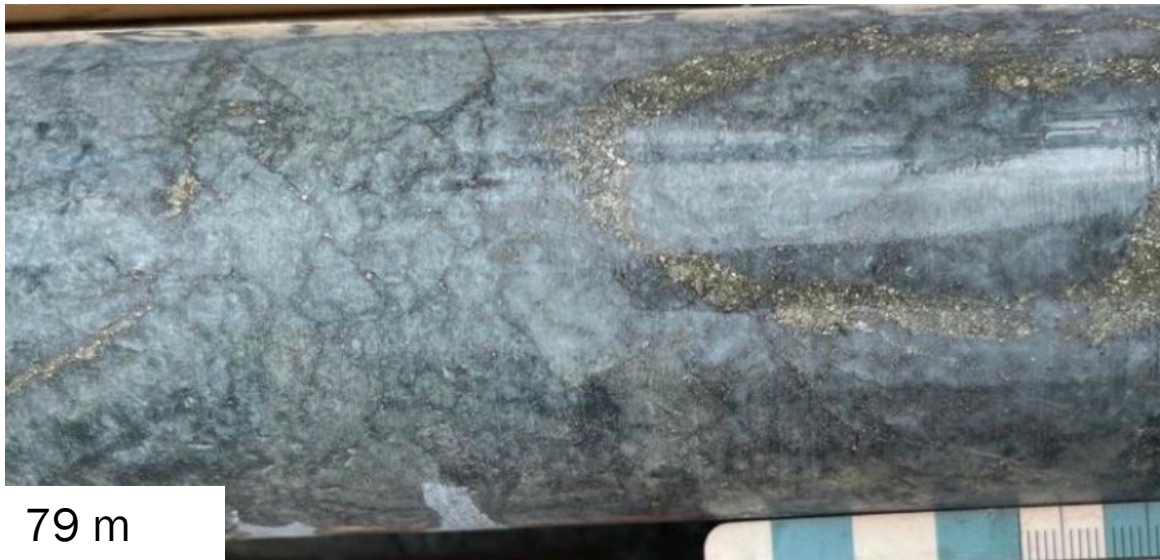
12 m @ 0.65% copper equivalent

0.4 % Cu + 0.35 g/t Au + 2.1 g/t Ag + 19.7 ppm Mo

145 m -157.47

12.47 m @ 0.69% copper equivalent

0.4% Cu + 0.39 g/t Au + 1.34 g/t Ag + 91 ppm Mo



Gold Halo/ IS QSP epithermal gold Gold Zone

Gold Halo

OW-2022-08

From	To	Interval	Au	Ag
4.5m	219m	214.5m	0.21g/t	1.6g/t

DC96-02

From	To	Interval	Au	Ag
3.05m	233.1m	230.05m	0.25g/t	DL

DH-2007-03

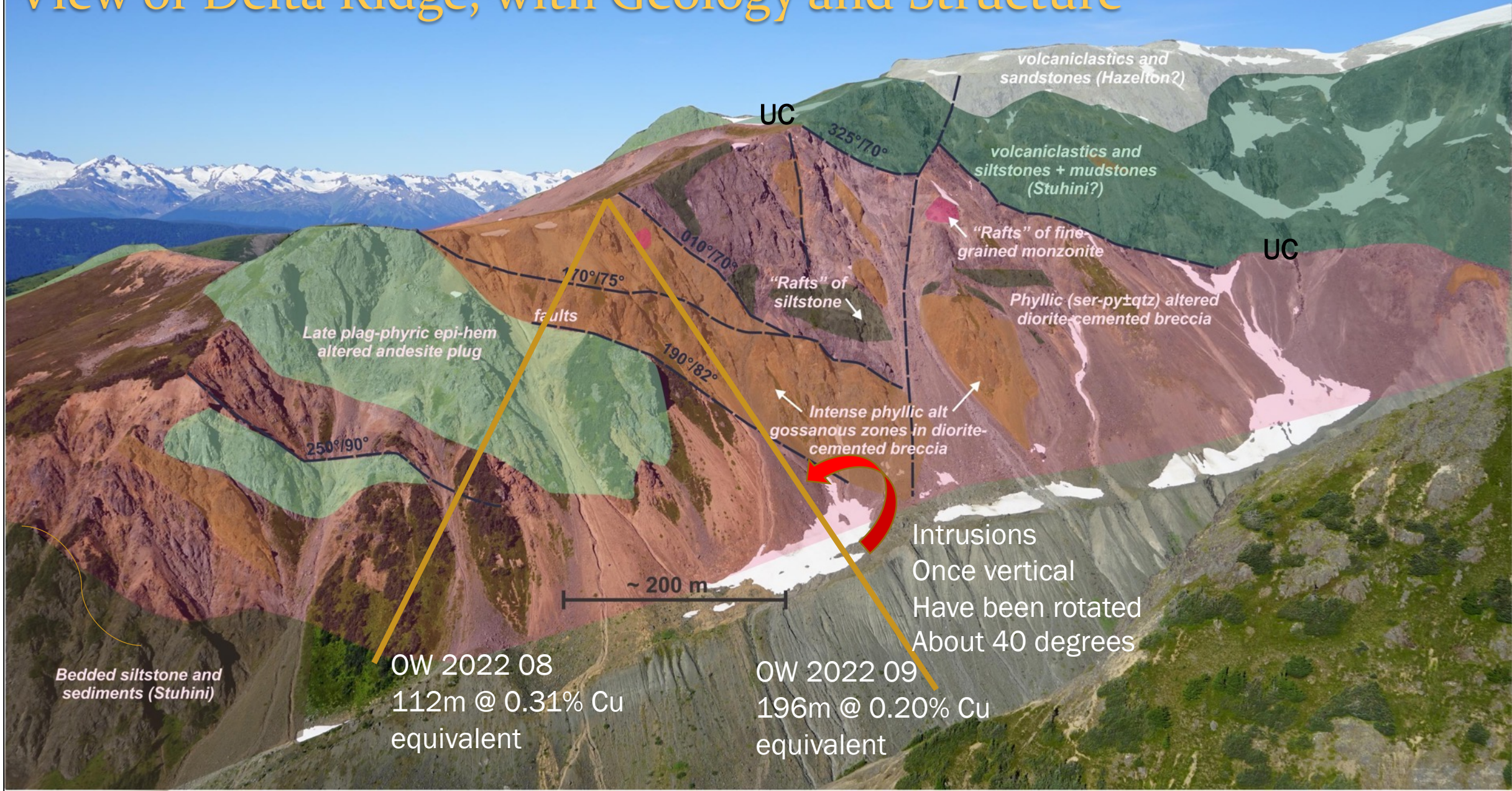
From	To	Interval	Au	Ag
56.52m	196.56m	139m	0.25g/t	DL

Intermediate Sulphuration epithermal gold

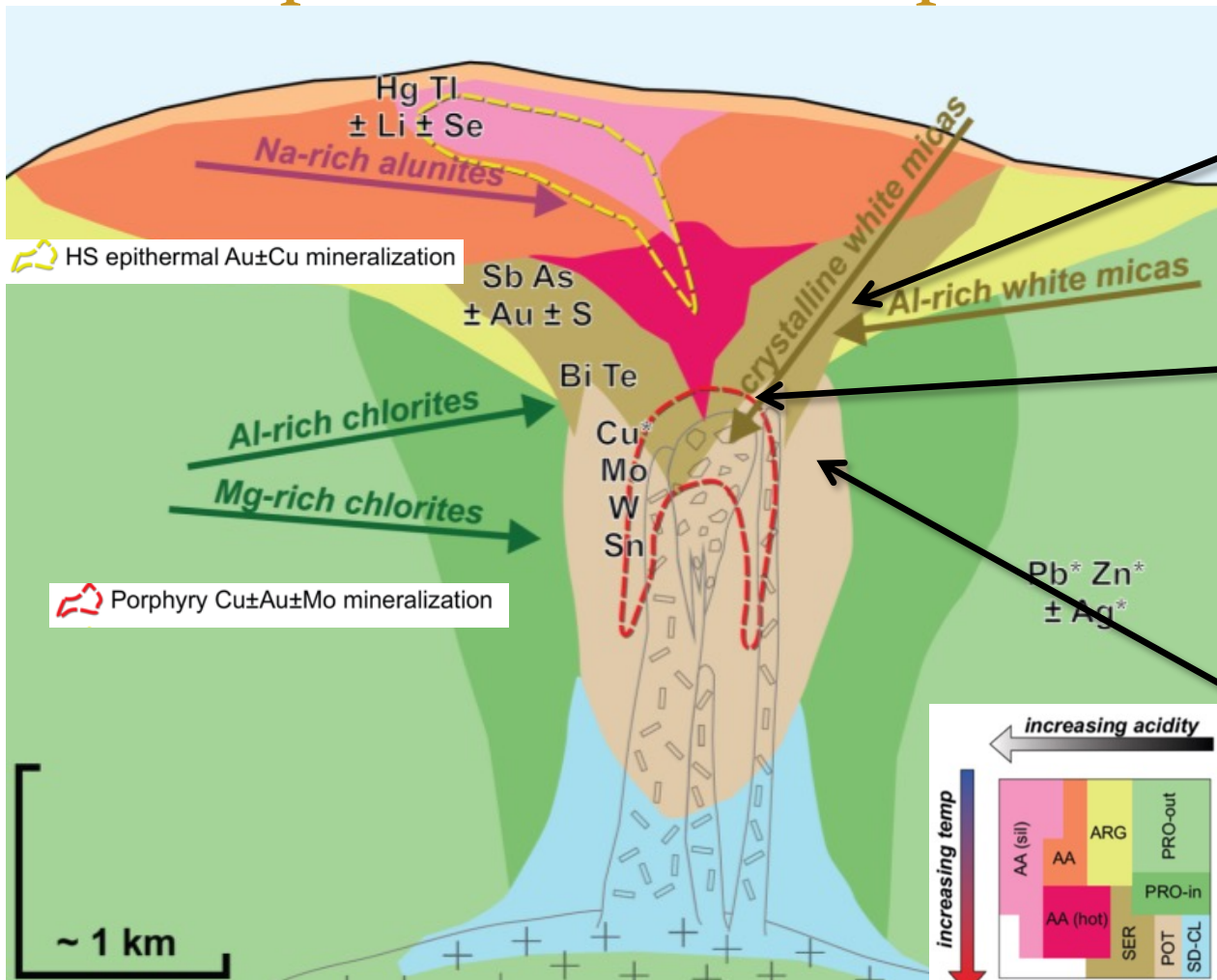
From	To	Interval	Au	Ag	Te
34m	38.32m	4.32m	1.93g/t	32.0g/t	11.9g/t
including					
34m	36.1m	2.1m	3.48g/t	60.8g/t	46.2g/t



View of Delta Ridge, with Geology and Structure



Oweegee Porphyry Model and Interpreted Level of Exposure



Ideal calc-alkalic porphyry Cu +/- Au +/- Mo and high sulfidation epithermal Au +/- Cu alteration. Modified after Sykora 2021.

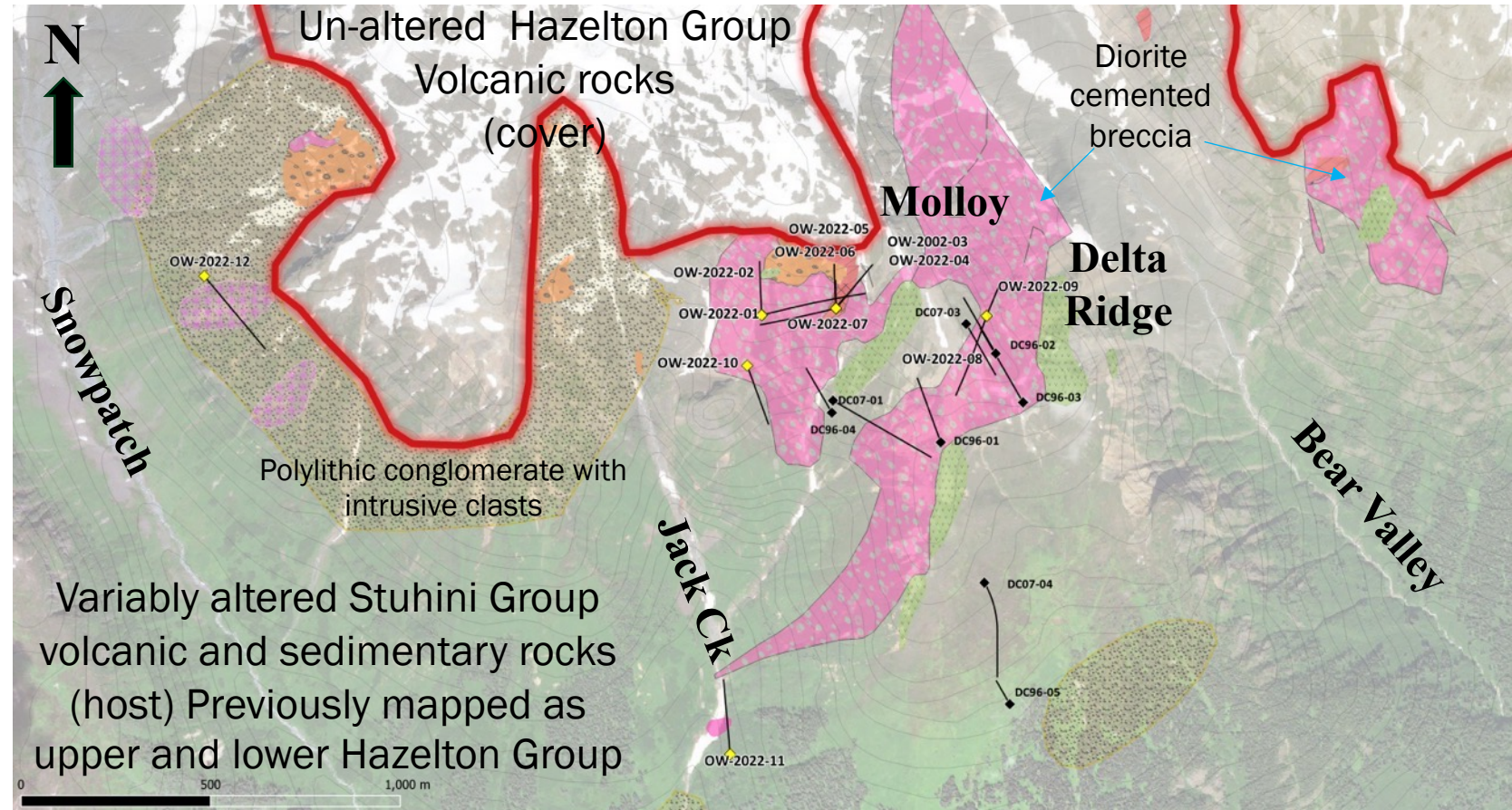
Geology: New Understandings

Our work has changed the geological understanding of the southern portion of Oweege Dome. An area that was not traversed by the GSC in 1994 (Open File 2688).

Triassic age Stuhini Group sedimentary and volcanic rocks host Cu-Au bearing 'fertile' intrusions, which hosts copper mineralization, over an >10km² area.

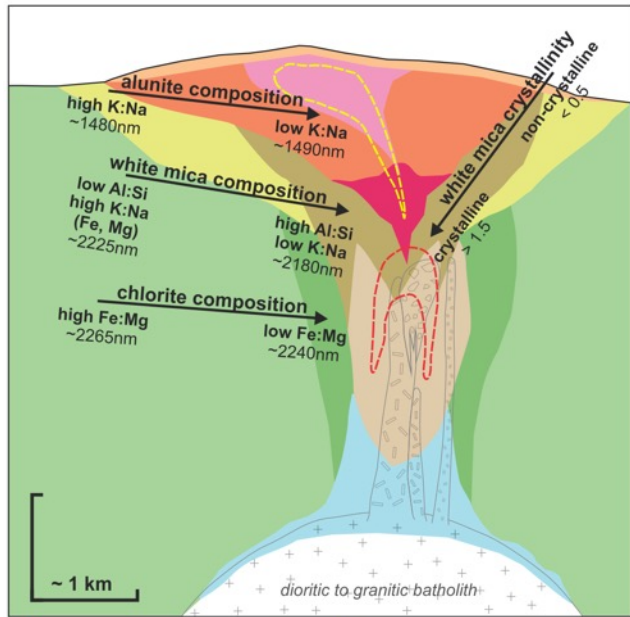
Intrusions and associated alteration are overlain by younger Hazelton Group volcanic rocks

Mineralization age and geologic setting are consistent with other advanced porphyry systems in BC (Schaft Creek)

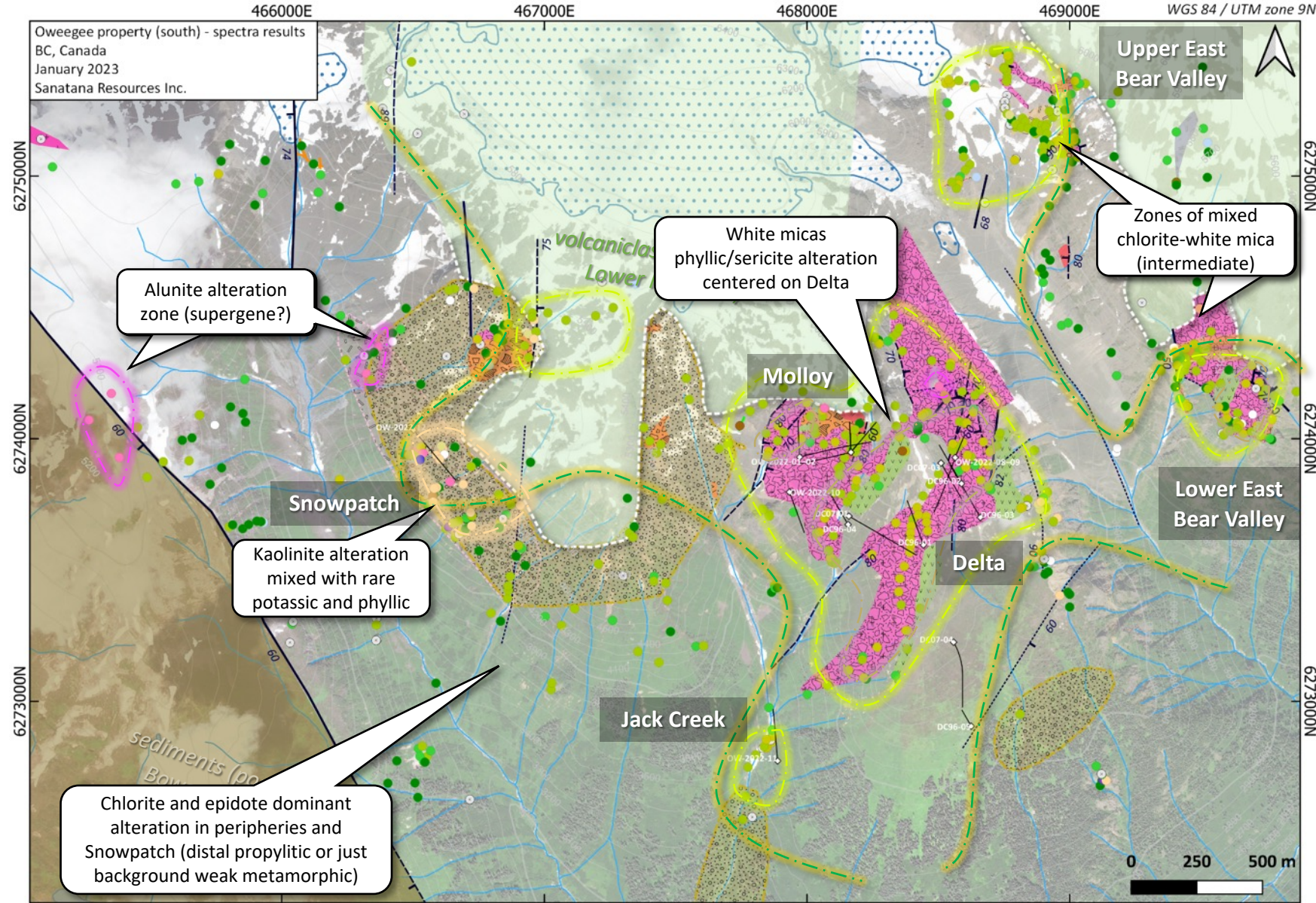


Spectra: Alteration Mineral Groups

Plot of the SWIR-identified alteration group for each samples analyzed



+ Porphyry Cu±Mo±Au mineralization
 + HS epithermal ±Au±Cu mineralization

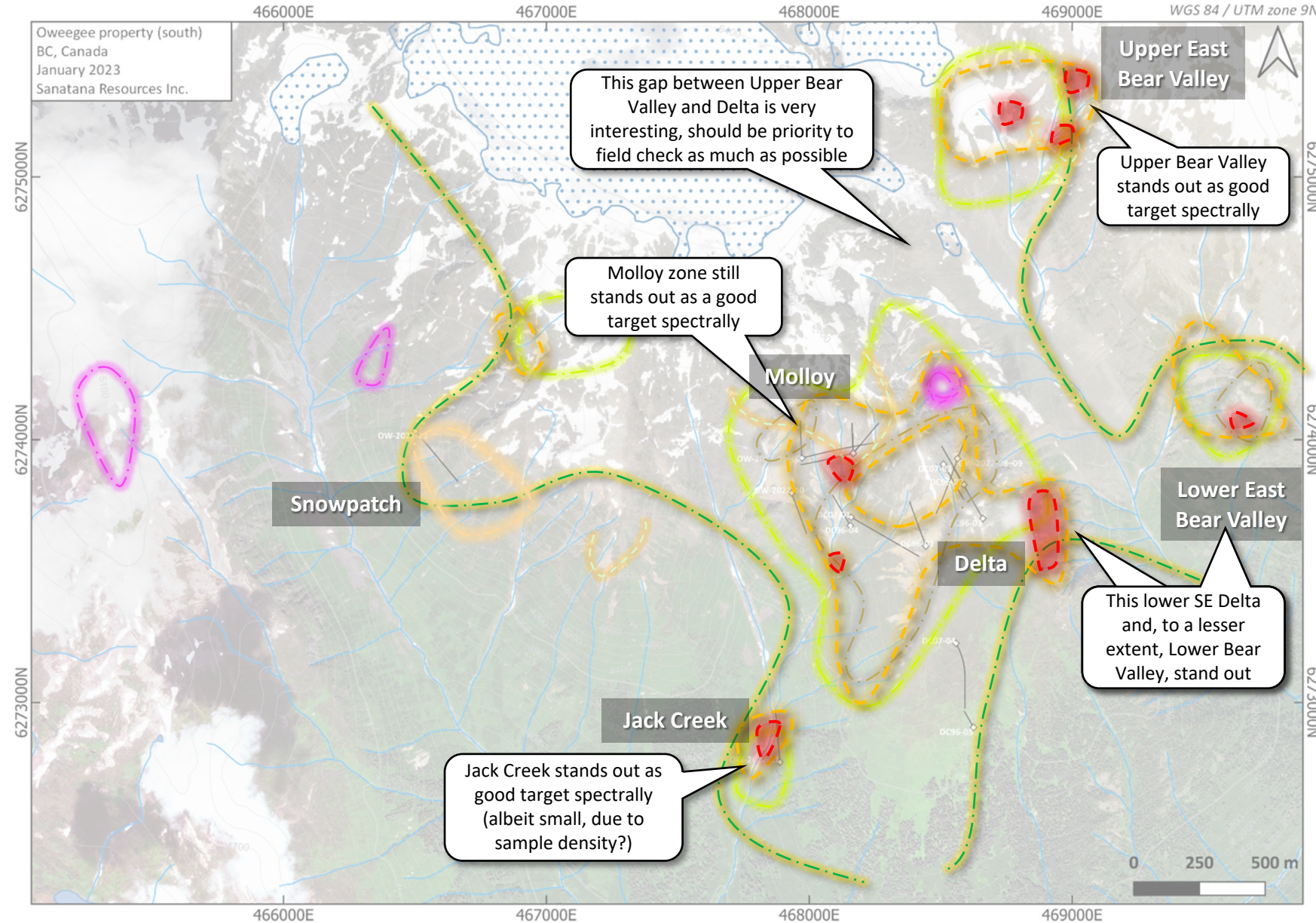


LEGEND

- | | | | | | |
|--|--|---|---|---|--|
| <ul style="list-style-type: none"> Contours
100 ft Rivers Ice Drillholes
◇ Collars and surveys | <ul style="list-style-type: none"> Faults (draft Aug 2022)
- - - 1 = low confidence
- - - 2 = mod confidence
- - - 3 = high confidence Geology contact (draft Aug 2022)
- - - Unc Geology (draft Aug 2022)
Volcaniclastic (possibly Lower Hazelton) | <ul style="list-style-type: none"> IOO (mega-crystic feldspar phyrlic syenite intrusive) VAN (late epi-hem altered plag-phyrlic andesite plug) SCO (zone of polymictic conglomerates with intrusive clasts) ZPBx (polymictic chaotic phreatomagmatic breccia?) IPC (crowded porphyry dikes) IDCBx (diorite-cemented breccia) IDI (diorite) IMO (monzonite) IMOP1 (monzonite phase 1) | <ul style="list-style-type: none"> Zone of Skowill phyllic-altered dikes Zone of Snowpatch potassic-altered dikes | <ul style="list-style-type: none"> CHL-EPI_mix EPI AMP-TALC WMICA WMICA-KAOL_mix WMICA-CHL_mix SMEC GYP ZEOL | <ul style="list-style-type: none"> CARB OXIDES ASPECTRAL ERROR |
|--|--|---|---|---|--|

Spectra: Scalars Together

Several zones are clear stand outs with the spectra data. Keeping in mind the Hazelton “cap” in upper elevations and the lack of exposer in Bear Valley, the system could be much more connected than the map pattern shows so far, with several zones that trend towards more “porphyry proximal” with good crystalline white micas vectors and weaker vectors with compositions of chlorite, white mica and alunite



LEGEND

- Contours
 - 100 ft
- Rivers
- Ice
- Drillholes
 - Collars and downhole survey projection

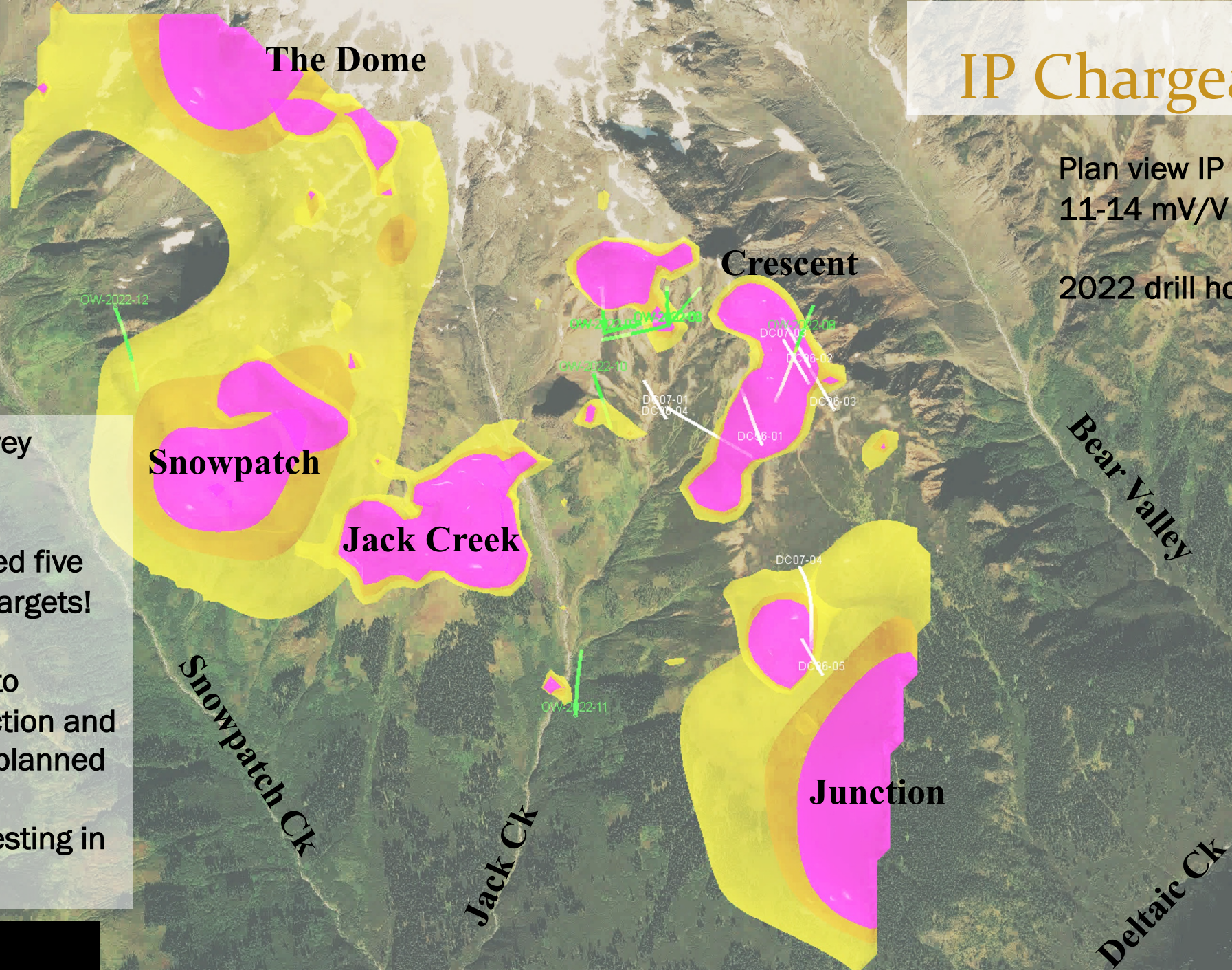
IP Chargeability

Plan view IP Chargeability
11-14 mV/V iso-shells

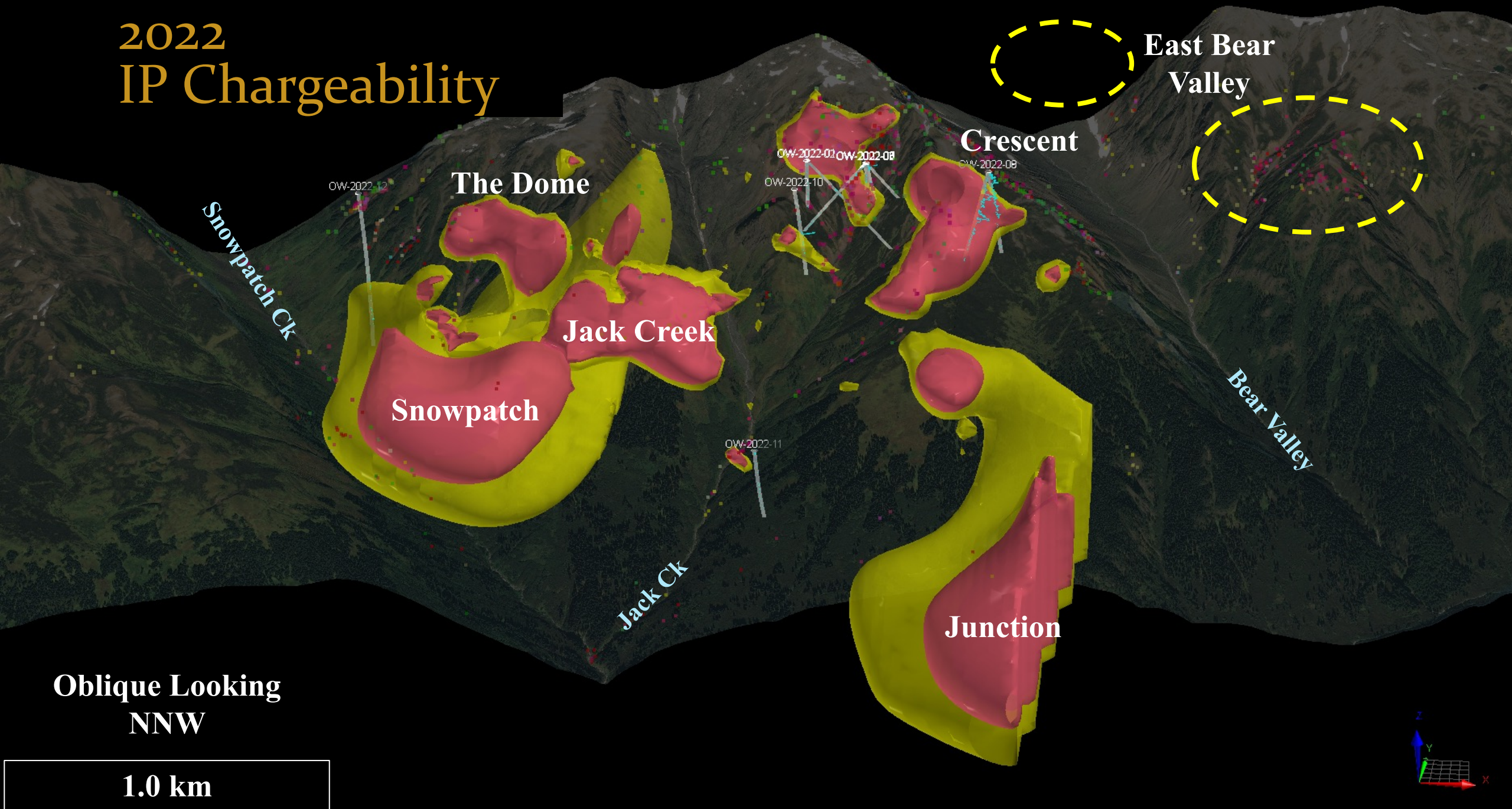
2022 drill holes in green

- 18 line km IP survey completed
- The survey revealed five new high priority targets!
- Survey extension to complete the Junction and Dome anomalies planned
- Followed by drill testing in Summer 2023

~ 1.1 km



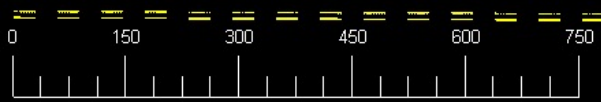
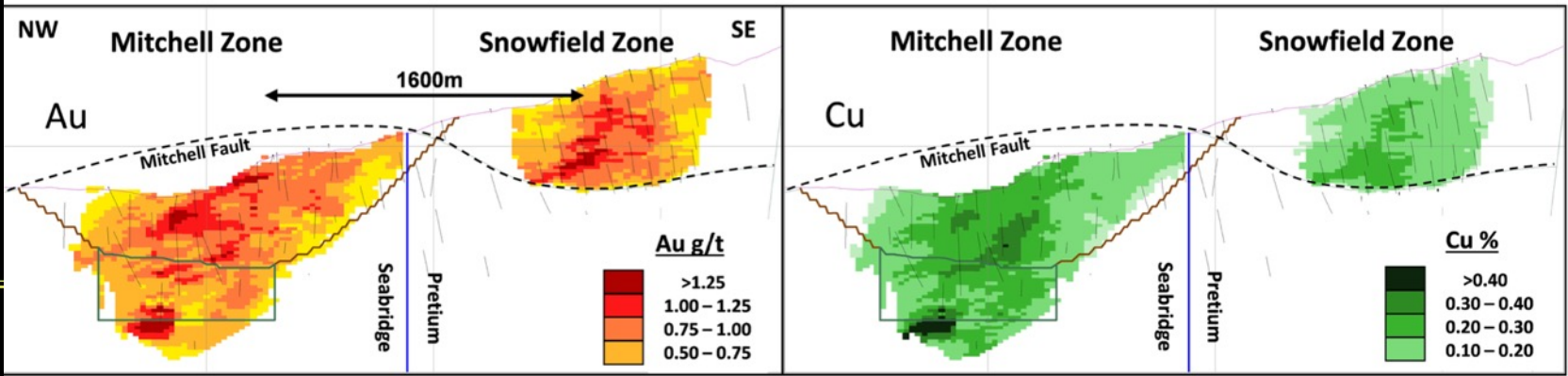
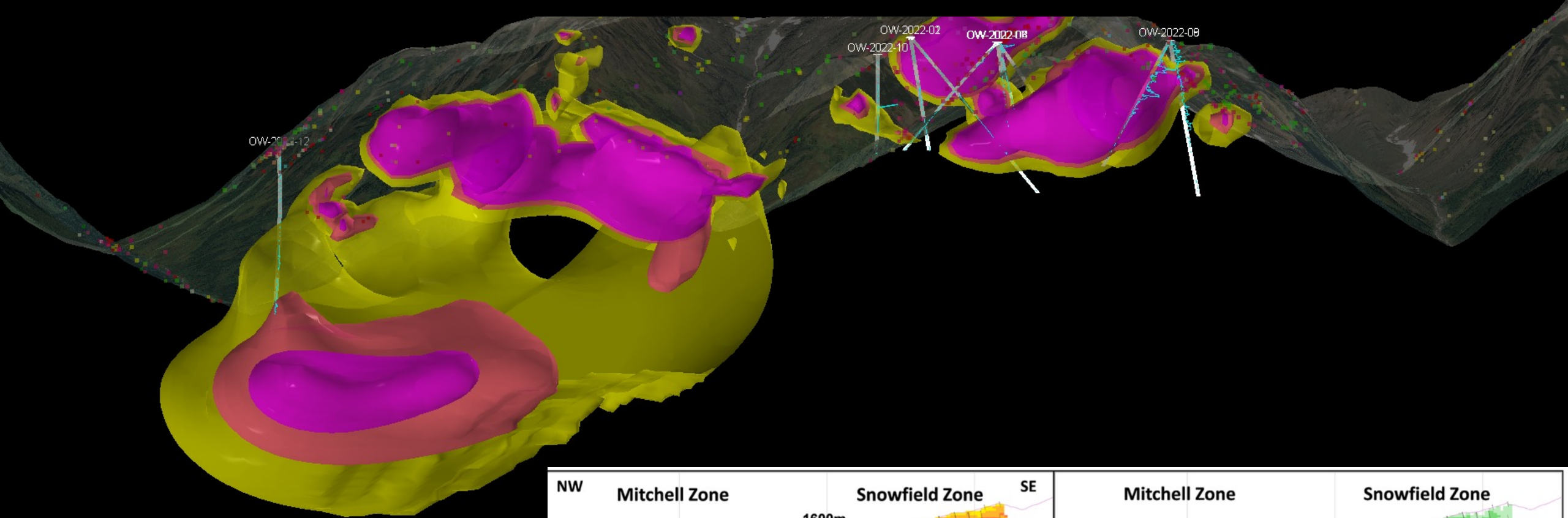
2022 IP Chargeability



Oblique Looking
NNW

1.0 km

Possible similarities between Oweege and Mitchell/Snowfield



Oweegee Dome 2023 Plans and Timeline



Summary

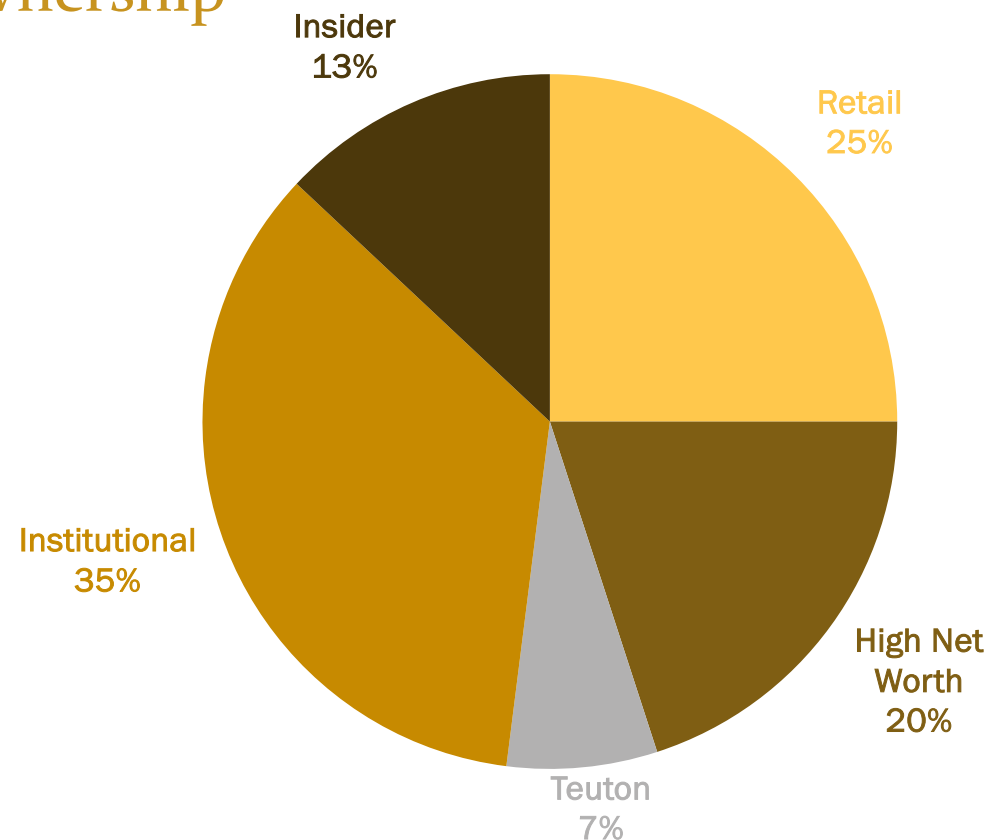
- Recognition that the Oweege is a large 4km by 2.5km underexplored porphyry system
- Multiple mineralizing events, each with the potential to host an economic deposit
- 2022 reconnaissance drilling encountered three separate mineralized systems
- Drilling demonstrated significant Cu:Mo:Ag grades
- Geophysics, geochemistry and geology identify high priority drill targets
- Drilling and IP planned and permitted for 2023
- Right location, excellent infrastructure, significant results...

...the next major discovery in the GT?

Capital Structure and Ownership (as of January 5, 2023)

Shares	75,650,822
<hr/>	
Warrants	
Exercise price \$0.20 11/05/24	2,000,000
Exercise price \$0.20 11/05/24	7,003,333
Exercise price \$0.20 04/26/24	1,124,400
Exercise price \$0.10 12/30/24	410,000
Exercise price \$0.15 12/30/24	5,500,000
<hr/>	
Stock Options	
Exercise price \$0.35 09/30/25	2,850,000
Exercise price \$0.20 06/06/27	2,550,000
Exercise price \$0.16 04/29/26	400,000
Exercise price \$0.16 10/27/26	600,000
<hr/>	
Fully Diluted	98,088,555

Ownership





TSXV: STA

© 2022 Sanatana Resources Inc.

Phone: 604.408.6680

Fax: 604.608.9500

Investor Relations

investor@sanatanaresources.com

General Enquiries

info@sanatanaresources.com

www.sanatanaresources.com

